



Park Table



Summary

Discover the **Cornilleau Park Table**



Ping

Many **good reasons** to start playing Ping

Cornilleau

40 years of **knowledge** in Table tennis

Design

Unique design

Materials

Performance and durability of the materials

Assembly

Easy and fast **assembly**

Grounds and anchorage

Anchorage system **and grounds**

Quality

Quality testings **and resistance**

Market

How to **choose your table** ?





Ping

Many good reasons to start playing Ping



Ping

Many **good reasons** to start playing Ping



A popular **and all-ages sport**

Can be played by two, three, four people... with friends, family, and can be enjoyed at any age.

It doesn't **matter your level**

Un apprentissage de quelques heures permet de connaître les bases suffisantes pour commencer à jouer et s'amuser.

Free access sport

A table can be installed in Parks, next to playing area, on terraces, in camp sites... The needed space is limited.

ping



Ping

Many **good reasons** to start playing Ping



Develops the **psychomotricity**

It helps to develop the psychomotricity (Coordination of the body movements, mobility and moving fastness).

Very funny, this sport helps to develop your focus, anticipation and strategy.

Free play **or supervised**

Ping





Cornilleau

40 years of knowledge in Table tennis



Cornilleau

40 years of knowledge in Table tennis



40 years of **experience**

Since 1969, Cornilleau has evolved into the world leader in table tennis design, with highly innovative and top-quality products.

European **Leader**

Cornilleau is expert in table tennis and the European Leader of the industry

cornilleau





Design

Very Unique design



Design

Very Unique design



Curved lines

Curved lines offers more security (Table legs made of curved and arched tubes, corners around the table and net are curved for more security)

design



Design

Very Unique design



Well-thought out shape

Geometry and assembly of the legs reinforce the top and the stability of the table.

Easy integration

The neutral color of the table is adapted to any kind of environment.

Stability and **security**

A very specific design for a high standard of stability. Thanks to their arched style, the feet are supporting themselves and prevent the table from being falling out, even without ballast. It supports up to 1 600kg.

design





Materials

Performance and durability of the materials



Materials

Performance and durability of the materials



Selected materials

Our experts selected materials that resist to all Outdoor conditions and all forms of vandalism. Cornilleau tables have a 10 years warranty. In fact, materials and process give to the table a much longer durability.

High playing performance

The bounce quality is very high and there is no other material that can compete. The other benefit is an excellent spin restitution.

With the addition of the Mattop technology, sun reflection is divided by 10.

Materials



Materials

Performance and durability of the materials



Materials



Materials

Performance and durability of the materials

Mélamine protectrice

Bandes blanches et
teinte grise inaltérables

Résine

Joint de dilatation



High quality tops :

- Rot-proof high resistance materials.
- Outdoor covering made of 9mm resin laminate for very good bounce and spin restitution :
- Made with resin a protecting melamine
 - Highly resistant to shocks and blows
 - Totally weatherproof (any kind of outdoor conditions)
 - UV resistant to limit color fading
 - Limited risk of burning and non-toxic
 - White lines and slate color do not fade
 - Soft touch
- Curved angles and high finishing level
- Cornilleau MATTOP Technology included to reduce sun reflection by 10.
- 10 years warranty.

**LE SOLEIL
N'EST PAS UN PROBLÈME**

Surface spéciale



Materials

Performance and durability of the materials



Steel frame and legs

- Sturdy and galvanized materials with high durability :
 - Resistant to intense use
 - Resistant to extreme outdoor conditions
 - Diam. 90mm supporting structures
 - 80 x 45 mm frame
 - Galvanized steel
 - Non flammable
 - Non toxic
 - Soft touch
 - Curved corners
 - 100% recyclable
- 10 years warranty.

Materials



Materials

Performance and durability of the materials



Steel net :

- High resistance material made of galvanized steel with epoxy painting for intense use
 - Resistant to extreme outdoor conditions
 - Thickness 3mm
 - Non flammable
 - Non toxic
 - Galvanized steel
 - Soft touch
 - Curved corners
 - 100% recycling
 - Satisfy safety standards for children security
- 10 years warranty

Materials



Materials

Performance and durability of the materials



Cornilleau knowledge :

- Made in France / After sale service 10 years.

Since 1969, all Cornilleau tables are manufactured in our very unique plant based in Bonneuil les Eaux (Oise), birth place of the Cornilleau Family.

All spare parts are available for 10 years.

- Resin laminate top with 10 years warranty.
- Structure made of galvanized steel with 10 years warranty.
- Galvanized steel legs with 10 years warranty.
- Galvanized steel frame with 10 years warranty.
- Galvanized steel net with 10 years warranty.

Materials





Assembly

Easy and fast **assembly**



Assembly

Easy and fast assembly



Strong packing and palettization :

- 1570 mm x 1414 mm packing / 490mm height.
- Strong protection with conglomerated wood palets.
- Parts are locked with blocks for perfect stability.
- Complete plastic shrink.
- Easy transport with a forklift
- Possibility to pile tables (4 tables max.).

Max. weight for 1 piece 48.4 kg

Table weight with ballast (sand) 400 kg

Packed Table weight 282kg

Ballast storage weight 18,5 kg (x2)

Top weight (frame + resin) 48,4 kg

Legs weight 59,4 kg

Screws weight (1 pack) 1,3 kg

Steel net weight 5,3 kg

Assembly



Assembly

Easy and fast assembly



Table assembly without ballast

- 2 people / 30 minutes
- 30 screws with a spanner and hex wrench



Assembly



Assembly

Easy and fast assembly



Table assembly with ballast

- 2 people / 40 minutes
- 46 screws with a spanner and hex wrench



Assembly

Easy and fast assembly



Table assembly with ballast

- 2 people / 40 minutes
- 46 screws with a spanner and hex wrench.



Assembly





Grounds and anchorage

Anchorage systeme and grounds



Grounds

indication



Grass

- Space under the table must be mowed.
- Playing area must be reinforced to prevent from erosion.
- Recommended use of ballast or fix table to the ground with anchorage blocks.

Stabilized soil

- No maintenance
- Recommended use of ballast or fix to the ground.

Grounds



Grounds

indication



Concrete / Synthetic grass

- Very durable and practical surfaces.
- Synthetic grass seems very similar to true green grass.
- Recommended use of ballast or fix to the ground.

Playing area covering

- No maintenance.
- Position the table on concrete ground.
- Recommended use of ballast or fix to the ground.

Grounds



Ancrages

Anchorage system



Fix table on a concrete ground (without ballast)

- Step 1 : Concrete slab or concrete blocks fixing to the floor
- Step 2 Position the table.
- Step 3 Preparing ground for receiving the table.
- Step 4 Set up (cheville) BTR M10.
- Step 5 Install the table.
- Step 6 Set up the plastic holders.
- Step 7 Screwing and tightening up (1 per leg).



Anchorage



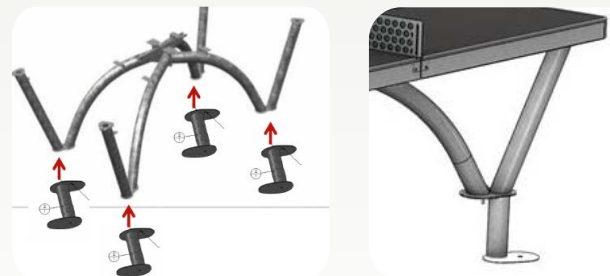
Ancrages

Anchorage system



Fix table on grass (without ballast)

- Step 1 During table assembly, add the metal (plots) to the 4 legs.
- Step 2 Position the table.
- Step 3 Dig 4 holes to welcome the legs (30 x 30 cm).
- Step 4 Install the tables and adjust the level.
- Step 5 Cover with grass or (terre?). Keep the (platine) visible.





Quality

Quality and resistance testing certified by our Research
& Development department



Quality

Quality and resistance testing certified by our Research & Development department



Shocks testing

Very high resistance to shocks and blows.



Quality



Quality

Quality and resistance testing certified by our Research & Development department



Burning resistance

The resin laminate is few flammable (M2 level).



Quality



Quality

Quality and resistance testing certified by our Research & Development department



Weight and stability testings

Supported weight is up to 1.6 T.

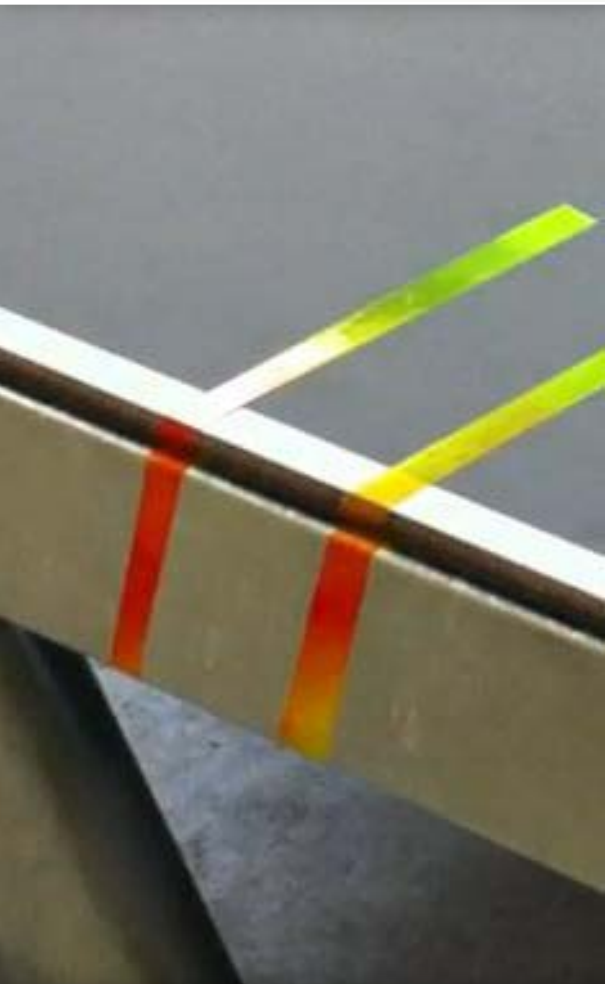


Quality



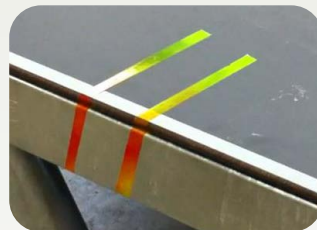
Quality

Quality and resistance testing certified by our Research & Development department



Easy cleaning

Tags are easily cleaned up (acétone).



Quality



Quality

Quality and resistance testing certified by our Research & Development department



Resistance to contamination

Tables has been submitted to (Acide Chlorhydrique et sulfurique) testings.

Quality





Market

How to choose your table ?



Market

How to choose your table ?

Table Composite

Concrete

Resin

Laminate /Steel

Warranty

2 to 5 years

5 years

10 years

Playing specifications

Bounce, spin restitution.

- - No grip, unregular bounce

+ Slippy surface, Ball does not grip

++ Great Bounce and grip

Top and legs resistance

- Weak to blows and shocks

- Legs are weak to blows and shocks

++ Resin laminate top and galvanized steel legs show great resistance

Comfort of use

Sun reflection

- - Very shinny top

- Shiny

+ Mattop covering

Market



Market

How to choose your table ?

Table Composite

Assembly

Table without ballast

Damage with the time

Concrete

- Heavy lift equipment needed or 5 people
- + Can be used without ballast
- Highly damage with the time (poreux, fissure)

Resin

- ++ Assembly within 30mn by 2 people
- Very light (75 kg) and high exposure to wind.
- = Wood and sponge of the top do not resist to shocks

Laminate /Steel

- ++ Assembly within 30mn by 2 people
- + Can be used without ballast in private areas (160 kg)
Damage with the time
- ++ Materials are resistant to all Outdoor conditions, shocks and vandalism
Price level

Market



Market

Price

Tables for institutions and parks

Table

SRP

Private area

510

700 - 800 €



Public area with free access

Balia / Donic / Joola

1 100 - 1 500 €



Public area with free access

Concrete / Natural stone

1 900 - 2 400 €



Market



Market

Cornilleau benefits vs composite tables



Cornilleau **benefits** vs composite tables

- Resin laminate top offers better bounce quality and grip.
- Less reflection thanks to Cornilleau Mattop technology.
- Resistance to shocks on the frame(vs fissure et moisture of the wood in a composite top).
- 10 years warranty vs 5 years.
- Design Cornilleau Design more modern and (convivial ?).
- Better ground fixing with Cornilleau Park table.
- Same assembly.
- 70% of the table is recycling (Legs, frame and net) vs net only on composite tables.

Market





cornilleau
FRANCE

